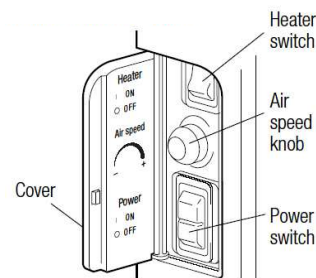


How to maintain Jet Towel

For more information, please refer to the user manual

Step 1 Turn Power switch off

- Open the cover on the top left hand side
- Turn Power switch off
- Close the cover

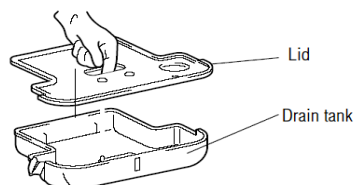
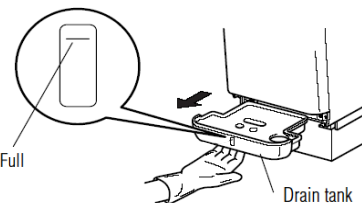


Step 2 Clean Drain tank

Heavy traffic (≥ 400 users/day) – Everyday

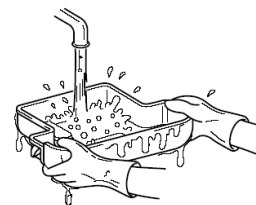
Light traffic (≤ 100 users/day) – Weekly

- Pull Drain tank out horizontally
- Open the lid and empty the drain water
- Wash out Drain tank
- Replace the lid and then Drain tank



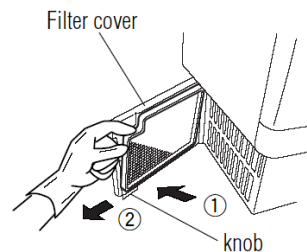
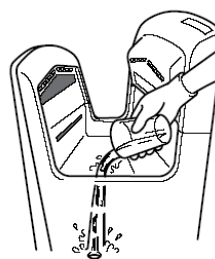
Step 3 Clean Drain pipe (Weekly)

- Ensure Drain tank is in place
- Pour 200 millilitres (a cup) of water through the drain pipe
- Empty the drain water from Drain tank



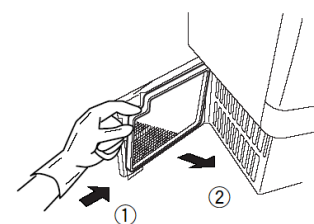
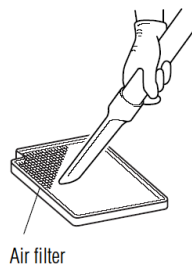
Step 4 Clean Air filter (Weekly)

- Open the filter cover on the bottom left hand side
- Remove Air filter
- Clean Air filter (eg by vacuuming or shaking)
- Replace Air filter behind the filter cover
- Close the filter cover



Step 5 Wipe the surface (Everyday)

- Wipe with warm water
- If necessary, use a neutral detergent, NOT thinner, benzene, abrasives, and then wipe the surface dry



Step 6 Turn Power switch on

- Open the cover on the top left hand side
- Turn Power switch on
- Do not put hands in within 2 seconds of switching (Jet Towel needs 2 seconds for initialisation)
- Close the cover

Air filter



Step 7 Check

- Check if Jet Towel starts when you put in your hands
- Check if Jet Towel stops soon after you withdraw your hands
- If it doesn't work properly, turn Power switch off, wait 40 seconds, then turn Power switch on for re-initialisation